



Churchfield C.E. Primary Academy

www.churchfield.staffs.sch.uk

Sandy Lane, Rugeley, Staffs.WS15 2LB

Tel: 01889 224520

Email: admin@churchfield.staffs.sch.uk

Trust Headteacher: Mr G. Lloyd

Friday 1st May 2026

Next Week

Dates of future events are at the end of the letter

Monday	Bank Holiday Monday - School Closed								
Tuesday	<table style="width: 100%; border: none;"> <tr> <td style="width: 50%;">Lunchtime Club</td> <td style="width: 50%;">After School Clubs</td> </tr> <tr> <td>Film Club</td> <td>Art Club</td> </tr> <tr> <td></td> <td>Gymnastics Club</td> </tr> <tr> <td></td> <td>Forest School Club</td> </tr> </table>	Lunchtime Club	After School Clubs	Film Club	Art Club		Gymnastics Club		Forest School Club
Lunchtime Club	After School Clubs								
Film Club	Art Club								
	Gymnastics Club								
	Forest School Club								
Wednesday									
Thursday	Year 3 trip to Stafford Railway Lunchtime Club Dance								
Friday	Celebrating David Attenborough's 100 th Birthday - dress up day 9am - Parent Workshop: dealing with emotional dysregulation at home Lunchtime Club Calm and Create								

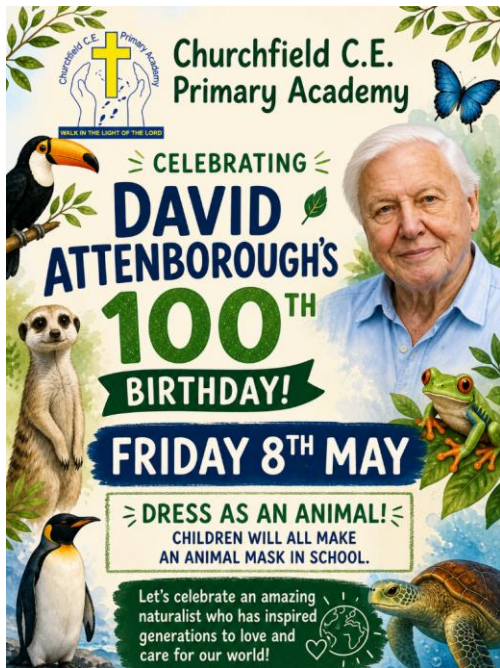
Dear Parents and Carers

The sunshine has made a welcome appearance this week, which must mean it's time to remind everyone to make sure children have sun-cream, hats and drinks with them for when they go outside. The smell of sun-cream has already started to fill the corridors!

Mental Health Support Team Workshop

The Mental Health Support Team will be in school at 9am on Friday morning running a parent workshop on managing emotional dysregulation at home. These events are always really useful for parents who attend and are open to all. If you would like to attend, or would like to know more about what will be covered, please get in touch with me on Dojo, at the door or by phone. There may even be a cup of tea and biscuits!

Celebrating David Attenborough's 100th Birthday



I am sure you will have seen the post from Miss Hall on Dojo earlier today. We are excited to celebrate the 100th birthday of Sir David Attenborough, a true national treasure who has inspired generations to care for our planet. In the lead-up to the event, pupils will be creating their own animal masks in school as part of their learning about wildlife and conservation. On Friday 8th May, children are then invited to come to school dressed as their favourite animal as we mark this special occasion together. It promises to be a fun and meaningful celebration, helping our pupils appreciate the beauty of nature and the importance of looking after it for the future.

Clubs

You will see above all the days and times for the clubs that are being put on for the children. If your child has a place at a club, please make every effort to ensure they attend. All the staff are giving up their own time to run and prepare for the clubs, so having full attendance will be much appreciated.

If you have anything you would like to discuss further, please do not hesitate to get in touch.

Yours Faithfully

Mr G Lloyd
Trust Headteacher

Value of the Month: Reverence

Reverence is the proper human response to what is holy and sacred. It is related to awe and respect. It is this profound respect that is expressed in the Biblical phrase 'the fear of the Lord'. This is not fear in the sense of terror or abject grovelling but a reverent acknowledgment of God's greatness and our complete dependence.

Such reverence is the proper response to the mystery of life and death, or to the created world in which we live.

Only fear the Lord and serve Him in truth with all your heart; for consider what great things He has done for you.

1 Samuel 12:24

Upcoming dates

Monday 11 th May	Start of Year 6 SATs Week
Friday 22 nd May	Break up for half-term
Monday 1 st June	Children return to school
Monday 1 st June	Year 4 Multiplication Tables Check - runs for two weeks
Monday 8 th June	Phonics Screening week - Y1 and some Y2
Friday 19 th June	School closed for INSET Day
Thursday 2 nd July	Sports Day
Friday 17 th July	Last Day of term: Year 6 Leavers Performance and Family Picnic

What Parents & Carers Need to Know about

YOUTUBE

YouTube is a video-sharing social media platform that allows billions of people around the world to watch, share and upload their own videos with a vast range of content – including sport, entertainment, education and lots more. It's a superb space for people to consume content that they're interested in. As a result, this astronomically popular platform has had a huge social impact: influencing online culture on a global scale and creating new celebrities.

INAPPROPRIATE CONTENT

YouTube is free and can be accessed via numerous devices, even without creating a YouTube account. Some content is flagged as 'age-restricted' (requiring the user to be logged into an account with a verified age of 18), but children can still view some mildly inappropriate material. This can include profanity and violence, which some young users may find upsetting.

CONNECT WITH STRANGERS

YouTube is a social media platform which allows people to interact with other (usually unknown) users. Account holders can leave comments on any video they have access to, as well as messaging other users directly. Connecting with strangers online, of course, can potentially lead to children being exposed to adult language, to cyberbullying and even to encountering online predators.

SUGGESTED CONTENT

YouTube recommends videos related to what the user has previously watched on their account, aiming to provide content that will interest them. This is intended to be helpful but can also lead to binge-watching and the risk of screen addiction, especially if 'auto-play' is activated. Users without an account are shown popular videos from the last 24 hours, which might not always be suitable for children.

HIGH VISIBILITY

Content creators can also be put at risk – especially young ones who try to make their online presence as visible as possible. Creating and uploading content exposes children to potential harassment and toxicity from the comments section, along with the possibility of direct messaging from strangers. Videos posted publicly can be watched by anyone in the world.

TRENDS AND CHALLENGES

YouTube is teeming with trends, challenges and memes that are fun to watch and join in with. Children often find these immensely entertaining and might want to try them out. Most challenges tend to be safe, but many others may harm children through either watching or copying. The painful 'salt and ice challenge', which can cause injuries very quickly, is just one of many such examples.

SNEAKY SCAMMERS

Popular YouTube channels regularly have scammers posing as a well-known influencer in the comments section, attempting to lure users into clicking on their phishing links. Scammers impersonate YouTubers by adopting their names and profile images, and sometimes offer cash gifts or 'get rich quick' schemes. Children may not realise that these users are not who they claim to be.

Advice for Parents & Carers

APPLY RESTRICTED MODE

Restricted Mode is an optional setting that prevents YouTube from showing inappropriate content (such as drug and alcohol abuse, graphic violence and sexual situations) to underage viewers. To prevent your child from chancing across age-inappropriate content on the platform, we would recommend enabling Restricted Mode on each device that your child uses to access YouTube.



TRY GOOGLE FAMILY

Creating a Google Family account allows you to monitor what your child is watching, uploading and sharing with other users. It will also display their recently watched videos, searches and recommended videos. In general, a Google Family account gives you an oversight of how your child is using sites like YouTube and helps you ensure they are only accessing appropriate content.



CHECK PRIVACY SETTINGS

YouTube gives users the option of uploading videos as 'private' or 'unlisted' – so they could be shared exclusively with family and friends, for example. Comments on videos can also be disabled and channels that your child is subscribed to can be hidden. If your child is only uploading videos that are protected as 'private', they are far less likely to receive direct messages from strangers.



CHECK OTHER PLATFORMS

Influential content creators usually have other social media accounts which they encourage their fans to follow. Having an open discussion about this with your child makes it easier to find out how else they might be following a particular creator online. It also opens up avenues for you to check out that creator's other channels to see what type of content your child is being exposed to.



MONITOR ENGAGEMENT

YouTube is the online viewing platform of choice for billions of people, many of them children. Younger children will watch different content to older ones, of course, and react to content differently. You may want to keep an eye on how your child interacts with content on YouTube – and, if applicable, with content creators – to understand the types of videos they are interested in.



LIMIT SPENDING

Although YouTube is free, it *does* offer some in-app purchases: users can rent and buy TV shows and movies to watch, for example. If you're not comfortable with your child purchasing content online, limit their access to your bank cards and online payment methods. Many parents have discovered to their cost that a child happily devouring a paid-for series quickly leads to an unexpected bill!



Meet Our Expert

Clare Godwin (a.k.a. Lunawolf) has worked as an editor and journalist in the gaming industry since 2015, providing websites with event coverage, reviews and gaming guides. She is the owner of Lunawolf Gaming and is currently working on various gaming-related projects including game development and writing non-fiction books.



**National
Online
Safety**

#WakeUpWednesday